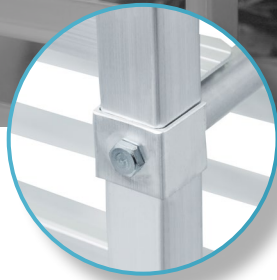
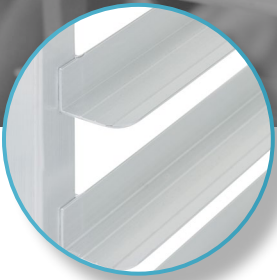


ALUMINUM BUN PAN RACK

DRACK-2018-ALUWB



FEATURES

- ✓ Made with NEW aluminum
- ✓ 20 shelves for 18" x 26" bun pans
- ✓ 4 heavy duty 5" swivel casters (2 with brakes)
- ✓ Dimensions: 26" x 20 ¼" x 69"
- ✓ Non-marking casters
- ✓ Easy to assemble
- ✓ Reinforcement bars in the middle

OPTIONAL ACCESSORIES

- ✓ Protective cover

Distributed by:

DISTEX

THORINOX

