

WALL CABINET

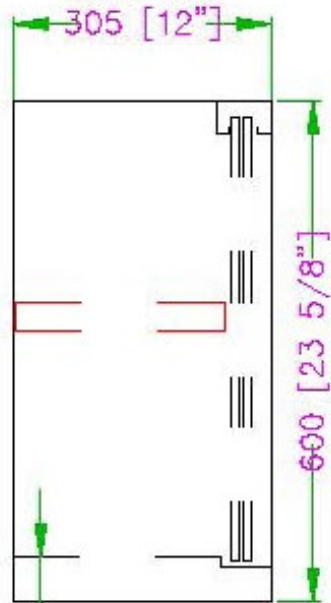
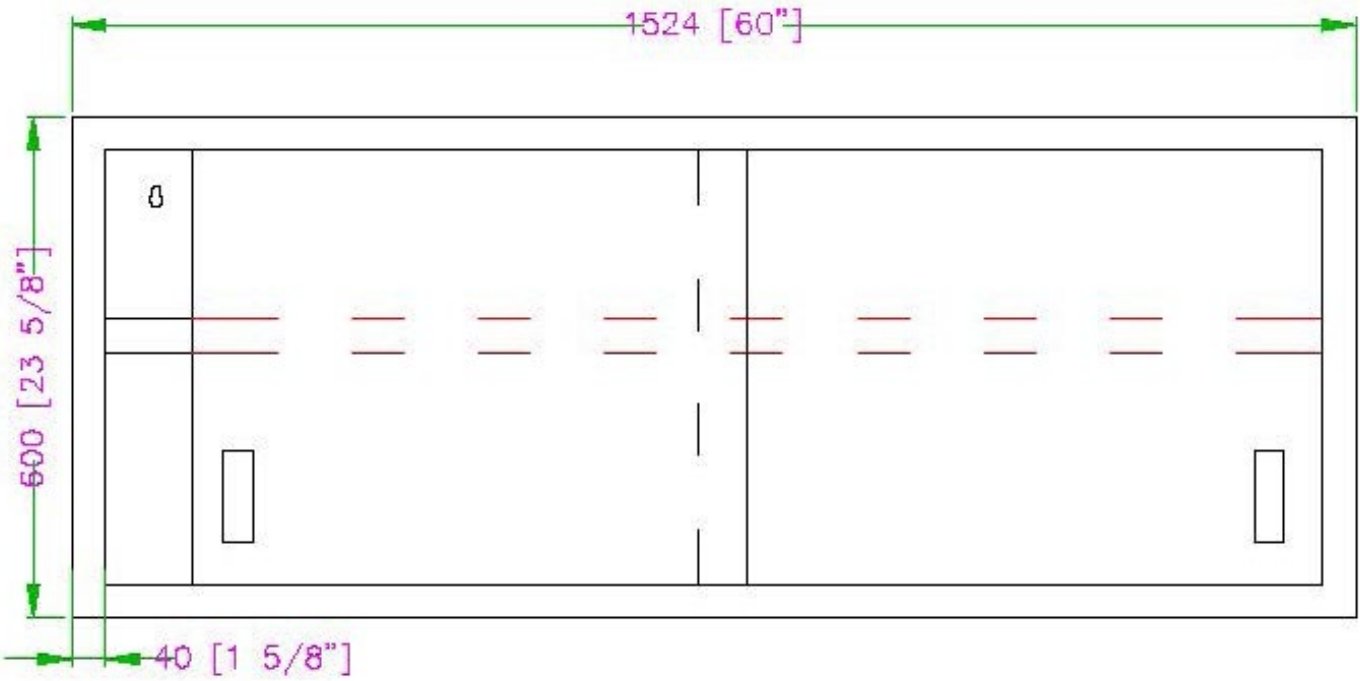
TWCA-1260-SS



FEATURES

- ✓ Made with high quality 18 gauge, 430 stainless steel
- ✓ Dimensions: 12" x 60" x 24"
- ✓ Delivered assembled
- ✓ Adjustable stainless steel middle shelf included
- ✓ Lock standard
- ✓ Max load: 66 lbs

Distributed by:



53 [2 1/8"]

