



*Model:*  
**VEX90IUCP SERIES**  
SELF CONTAINED

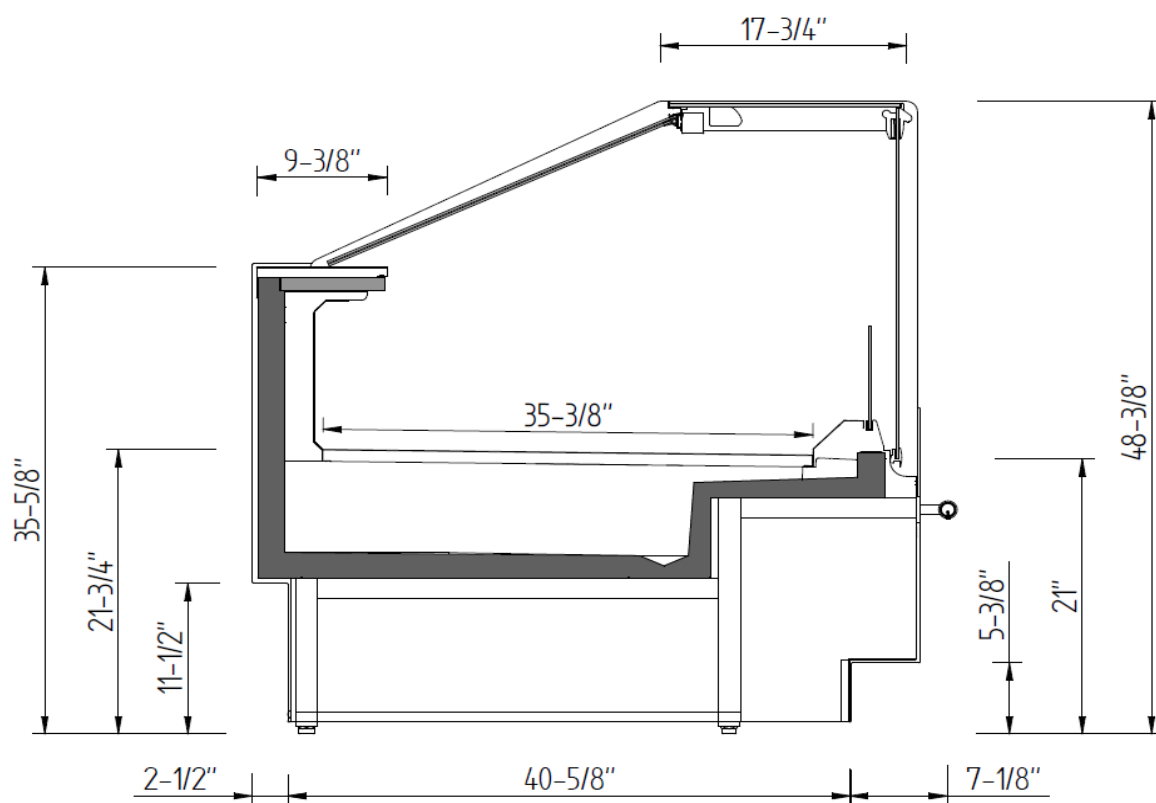


VEX90IUCP



VEX90ACIUCP

VEX90AAIUCP





## ESTANDAR FEATURES



### EXTERIOR

- ⊗ Epoxy painted steel sheet
- ⊗ Double panel glass sides
- ⊗ Adjustable feet.
- ⊗ Enamelled steel base.
- ⊗ Modulaire line design.



### INTERIOR

- ⊗ AISI 304 Stainless Steel.
- ⊗ Stainless Steel internal panel perforated.
- ⊗ Height and incline adjustable stainless steel shelves
- ⊗ Price channel on shelves and bottom display
- ⊗ LED lighting in canopy and under each shelf.



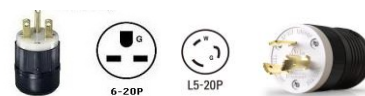
### INSULATION

- ⊗ CFC-Free polyurethane insulation, entire cabinet structure is foamed-in place using a high density polyurethane insulation.
- ⊗ Low GWP & Zero ODP effect.



### ELECTRICAL AND ELECTRONIC CONTROLLERS

- ⊗ Remote alarm signals.
- ⊗ Encapsulated and sealed NTC temperature probes.
- ⊗ Effective way to visualize temperature
- ⊗ Cord and NEMA 5-20P plug or 6-20P. Electrical connections is 115V/ 1ph/ 60 Hz



### REFRIGERATION

- ⊗ Digital temperature controller with automatic defrost system.
- ⊗ Forced air evaporator.
- ⊗ Forced air circulation to dissipate hot air.

## RECOMMENDED OPERATING CONDITIONS

>>> Equipment has been designed to operate in an environment where temperature and humidity do not exceed 75°F (24°C) and 55% relative humidity.

>>> Unit should not be installed near HVAC vents, fans or doorways that will disrupt the air curtain and compromise the function of the cabinet.

>>> Unit should not be installed in direct sunlight.

>>> Model will run most efficiently when completely loaded with pre-chilled product.

>>> Condensing coils should be cleaned regularly to avoid equipment malfunction.

>>> Please be advised that this type of models are louder than standard refrigeration models.

>>> Unit cannot be encased in a way that would block appropriate airflow and cause the recycling of hot air.

>>> A minimum distance of 4-5 inches is required at the back and top of the unit, do not flush the back of equipment directly to wall.

>>> Do not block any vents with product or any other item.

>>> Equipment must be loaded with pre-cooler product.

>>> Do not overload the shelves and/or block in a way that would prevent proper airflow.

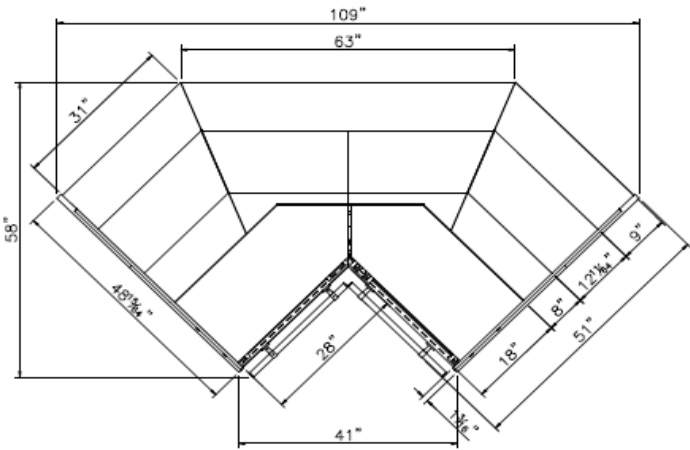
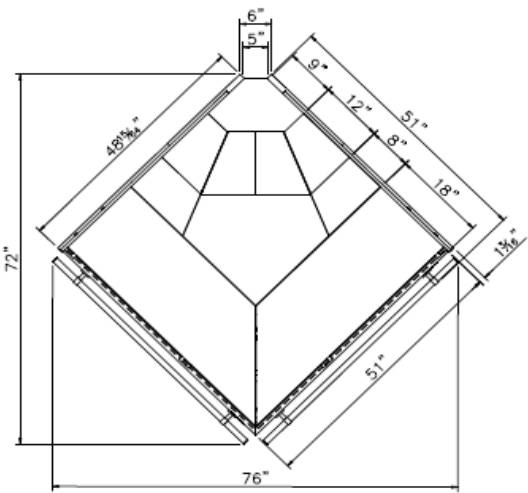
>>> Maintain the acrylic air diffuser at all times.



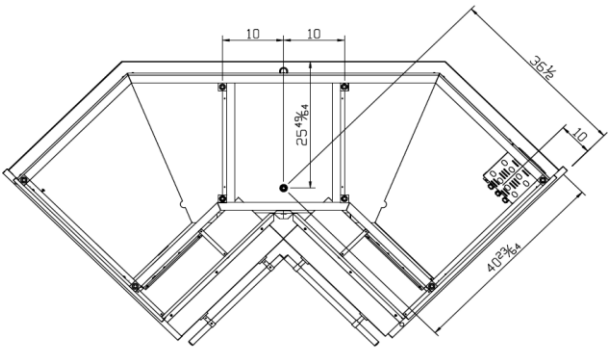
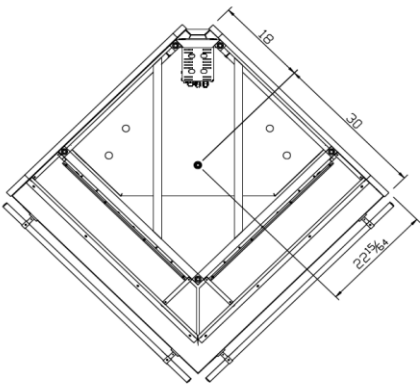
GENERAL DATA

	MODEL	
	VEX90AAIUCP	VEX90ACIUCP
SIDE WALL THICKNESS (in)	1 1/6	
REFRIGERATED AREA (ft <sup>2</sup> )	12 3/5	20
TOTAL VOLUME (Ft <sup>3</sup> )	5	7 1/3
TDA - AREA TOTAL DISPLAY (ft <sup>2</sup> )	--	--
WEIGHT (lb)	75	939
CRATED DIMENSIONS (in)	58 x 53 3/4 x 56 2/7	116 1/9 x 61 3/4 x 56 2/7

INSTALLATION DETAILS



DRAINAGE





## TECHNICAL CONFIGURATION

		MEDIUM TEMPERATURE [30°F/45°F]
INTERIOR TEMPERATURE	SET POINT	35°F
	DIFFERENTIAL	39°F
DEFROSTING SYSTEM		HOT GAS
NUMBER OF DEFROSTS / 24h		4
END OF DEFROSTING TEMPERATURE		46°F
MAXIMUM DEFROSTING TIME		30'

In compliance with UL471 and NSF7

Ambient Temp.	Humidity
+75 °F	55 %

EVAPORATION	VENTILATED
CONDENSATION	VENTILATED
EVAPORATION WATER COLLECTION	-

VOLTAGE	115V/60Hz
SOUND LEVEL	≤70 dB

## INSTALLATION DATA

BASE EQUIPMENT		MODEL	
		VEX90AAIUCP	VEX90ACIUCP
COMPRESSOR	N°	1	1
	Btu/h	3867	5033
	W	478	649
	A	5,99	6,09
REFRIGERANT	Type	R290	
	lb	0,23	0,33
COIL FANS	N°	1	2
	W	4,8	4,8
	A	0,07	0,07
CONDESATOR FANS	N°	1	2
	W	25	25
	A	0,425	0,425
LIGHTING	W	65	43
	A	0,3	0,20
EVAPORATION HEATERS	W	450	450
	A	3,91	3,91
POWER	W	573	752
	A	6,78	7,28
ENERGY CONSUMPTION	kWh/24h	8,93	12,27
MCA/MOP	MCA	13,00	13,74
	MOP	17,89	18,61

OPTIONAL EQUIPMENT		MODEL	
		VEX90AAIUCP	VEX90ACIUCP
SCC "CONDENSATION CONTROL SYSTEM"	W	14	14
	A	0,14	0,14