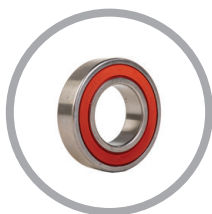


PRODIGY[®]
PLUS



Available in softer, Original Chewable Nugget Ice or harder, H² Nugget Ice

N0922 - 900lb Nugget Ice Machine

Prodigy Plus[®] Nugget Ice Machine

Features & Benefits

- Available in softer, Original Chewable Nugget Ice and harder, H² Nugget Ice
- Sealed, maintenance-free bearings for reduced preventative maintenance and long-lasting performance
- Stainless steel evaporator and auger for maximum durability
- AutoAlert™ indicator lights for better visibility
- Operational footprint among the industry's smallest
- Unit specific QR code for quick access to service manuals, cleaning guides and warranty history
- Front-breathing - No side clearance required for flexible placement
- Smart-Board™ advanced feature module available for additional diagnostic capabilities
- I control allows operators to customize ice levels
- rds internal surfaces between cleanings
- ergy-saving features



Time Production

Original Chewable Nugget

Remote Cooled		Water Cooled	
1°C	Air 90°F/32°C	70°F/21°C	Air 90°F/32°C
0°C	Water 70°F/21°C	50°F/10°C	Water 70°F/21°C
474 g	754/342 lb/kg	1094/496 lb/kg	817/371 lb/kg



Time Production

H² Nugget

Remote Cooled		Water Cooled	
1°C	Air 90°F/32°C	70°F/21°C	Air 90°F/32°C
0°C	Water 70°F/21°C	50°F/10°C	Water 70°F/21°C
406 g	717/325 lb/kg	908/412 lb/kg	740/357 lb/kg



Bin & Dispenser Options

Bin Application Capacity lb/kg		Finish	Ship Weight lb/kg
536/244		Poly	110/50
536/244		Metallic	150/68
778/353		Metallic	190/86
893/406		Metallic	209/95
ID200	30 x 30 x 35.625	-	Stainless Steel 183/83
ID250	30 x 30 x 39.625	-	Stainless Steel 188/85

*Contact Scotsman for bin top requirements. **Add 6" Height for bin legs.

† Stainless steel with galvanized back & bottom.



Nugget Ice

Original Chewable Nugget Ice Hardness Rating:
Soft = 74%

H² Nugget Ice Hardness Rating:
Hard = 87%



Certification



Warranty

- 3 years parts and labor on all components.
- 5 years parts on the compressor.
- Warranty valid in North, South & Central America for commercial installations.
- Contact factory for warranty in other regions.
- Residential Applications: 1 year parts and labor

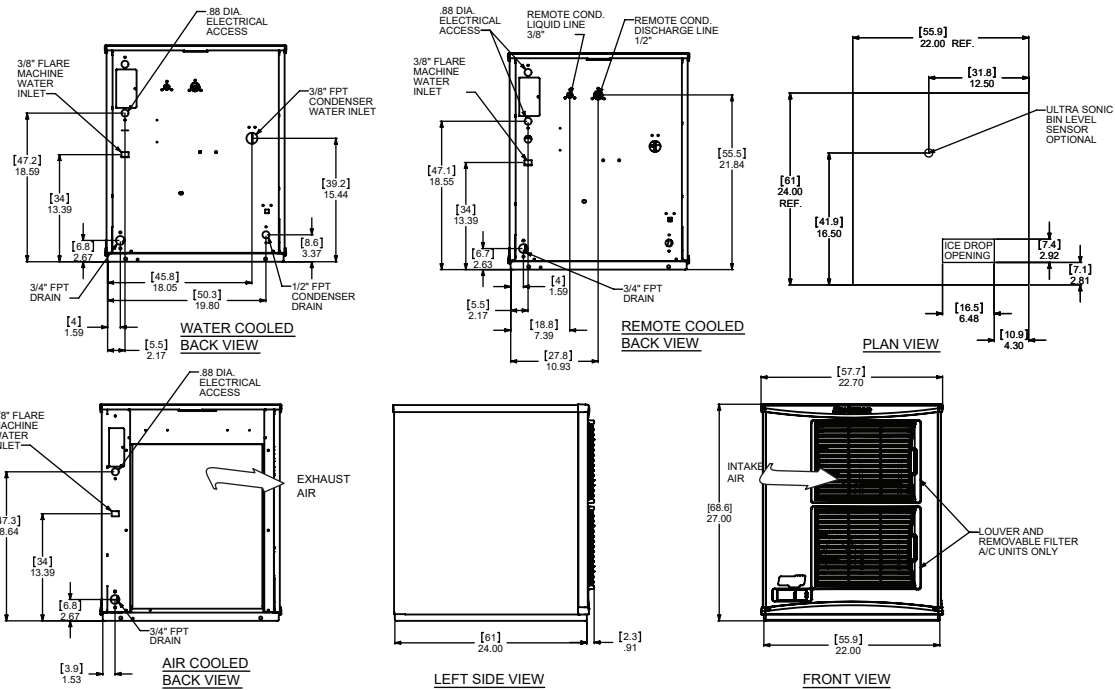
Scotsman[®]

• 101 Corporate Woods Parkway, Vernon Hills, IL 60061 •
• 1-800-SCOTSMAN • Fax: 847-913-9844 • www.scotsman-ice.com • customer.relations@scotsman-ice.com •

N0922 - 900lb Nugget Ice Machine

N0922 - 900lb Nugget Ice Machine

Prodigy Plus® Nugget Ice Machine



Specifications

							Water Usage			
Model Number	Condenser Unit	Basic Electrical	Max. Fuse Size			Energy Consumption	Gallons/100 lb (liters/45.4 kg)			
Nugget Type: Soft or Hard		Volts/Hz/Phase	or HACR Circuit Breaker (amps)	Circuit Wires	Min. Circuit Ampacity	kWh/100 lb (45.4 kg) 90°F(32°C)/70°F(21°C)	Potable 90°F(32°C)/70°F(21°C)	Condenser 90°F(32°C)/70°F(21°C)	Energy Star®	
soft	NS0922A-32	Air	208-230/60/1	15	2	13.2	4.73	12.0/45.5	-	✔
	NS0922R-32	Remote	208-230/60/1	15	2	13.0	4.6	12.0/45.5	-	
	NS0922W-32	Water	208-230/60/1	15	2	12.0	3.66	12.0/45.5	150/568.5	
hard	NH0922A-32	Air	208-230/60/1	15	2	13.2	4.87	12.0/45.5	-	
	NH0922R-32	Remote	208-230/60/1	15	2	13.0	5.01	12.0/45.5	-	
	NH0922W-32	Water	208-230/60/1	15	2	12.0	3.82	12.0/45.5	155/587.4	



All Models

Dimensions (W x D x H):

Unit:	Individual 22.9" x 24" x 27" (58.2 x 61.0 x 68.6 cm)
	Side by Side 45.8" x 24" x 27" (116.3 x 61.0 x 68.6 cm)
Shipping Carton:	25.5" x 27.5" x 32.5" (64.8 x 69.9 x 82.6 cm)

Shipping Weight: 210 lb / 95 kg BTUs per hour: 10,500

Refrigerant: R-404A



Accessories

Model Number	Description
KVS	Vari-Smart™ Ice Level Control - Program ice bin levels to match ice needs.
KSBU	Smart-Board™ Advanced Control - Use additional operational data for fast diagnosis.
KSBU-N	Smart-Board™ Advanced Control with Network - Network capable.
ERC311-32	Remote condenser for N0922R, 208-230V/60/1
BRTE10	Line set, 10ft, brazing required.
BRTE25	Line set, 25ft, brazing required.
BRTE40	Line set, 40ft, brazing required.
BRTE75	Line set, 75ft, brazing required.
KPAS	Prodigy Advanced Sustainability Kit - Includes KVS and KSBU - N

Scotsman recommends all ice machines have water filtration. See Scotsman water filter specification sheet for details.



Operating Requirements

	Minimum	Maximum
Air Temperatures	50°F (10°C)	100°F (38°C)
Water Temperatures	40°F (4.4°C)	100°F (38°C)
Remote Cond. Temps	-20°F (-29°C)	120°F (49°C)
Water Pressures	20 PSIG (1.4 bar)	80 PSIG (5.5 bar)
Electrical Voltage	-5%	+10%

Specifications and design are subject to change without notice.