

INSTALLATION OF REVERSIBLE DOOR

一.MAIN COMPONENTS

- 1.DOOR
- 2.TOP HINGE/BOTTOM HINGE
- 3.SPRING BAR
- 4.DOOR BUSHING
- 5.M5 BOLT/M6 BOLT
- 6.UNIT COVER CAP

二.CHANGE REVERSIBLE DOOR

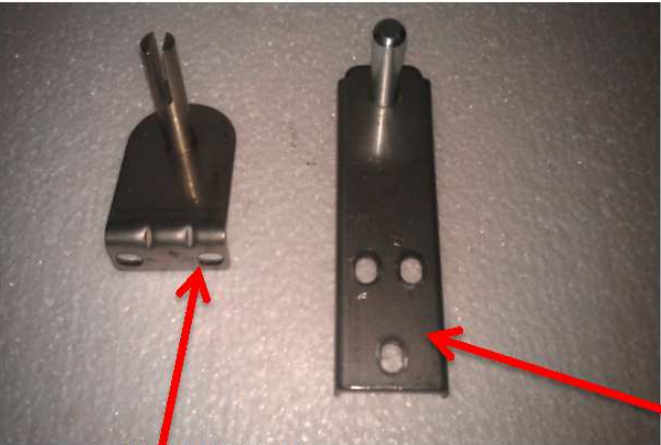
— .MAIN COMPONENTS INSTRUCTION

1.DOOR



DOOR

2..TOP HINGE/BOTTOM HINGE



TOP HINGE

BOTTOM HINGE

3.SPRING BAR



SPRING BAR

4.DOOR BUSHING

3 mm DOOR BUSHING

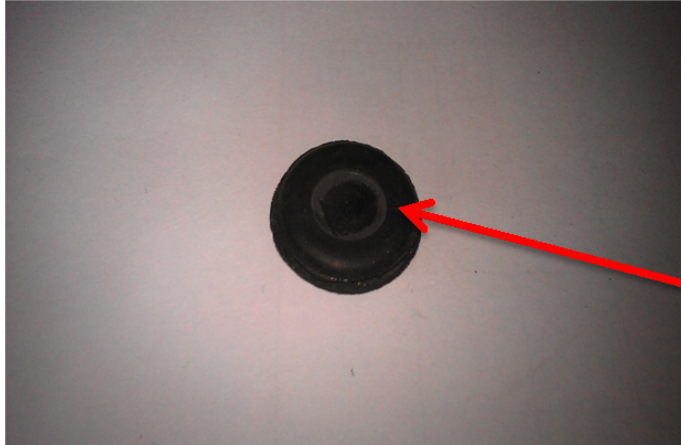


5 mm DOOR BUSHING

5.M5 BOLT/M6 BOLT



6.UNIT COVER CAP



UNIT COVER CAP

二. CHANGE REVERSIBLE DOOR (MST-28-711S MUR-28 MUF-28)

1.Unscrew the top hinge



2.Take apart top hinge from unit.



3.Lift the door, then remove it.



4.Unscrew the screws located on right of bottom hinge.



3.Screw the screws located on left of bottom hinge.



4.Take apart door dushing from the right bottom side of door .



5.Remove door bushing from right-top side of door.



6.Pull out spring bar from the right side of door.



7.Take apart unit cover cap from the left-top side of door.



8.Take off unit cover cap from the left-top side of door, then install it in the right side of door hole.



9.Put spring bar into the left of door.



10.Assemble the door bushing (3mm) in the left-top position of door.



11.Install the door bushing (5mm) in the left bottom side of door



12.After installing the door,screw the top hinge(follow the arrow)



13.Fix the top hinge with screwdriver



14.Follow the arrow while you open the door.

